

ELIT

Wall bracket V2A for down conductor Ø8-10mm

Stainless steel wall bracket (V2A) for conductors with Ø8-10 mm

Technical description

Wall bracket according to EN 62561-4 for round conductors Ø 8-10 mm, mounted with M6 stainless steel screws. Bracket is made of zinc-cast ZP 5 stainless steel.

Internal thread M8 - 20 mm for wall mounting.

Material: Stainless steel.

Weight: 45 g.

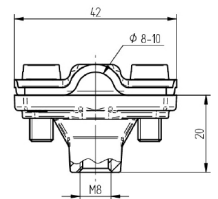
Advantages:

Wall bracket for round conductors Ø 8-10 mm

Mounted with screws M6 (V2A)

Made of zinc-cast ZP 5 stainless steel (V2A)

Internal thread M8 - 20 mm



| | |
|------------------------------|---|
| Product name/ Art.nr/ GTIN | ELIT VEGG-FEST-V2A-810MM/ 40170074/ 7070810032358 |
| According to: | EN 62561-4 |
| Type of accessory/spare part | Other |
| Accessory | Yes |
| Material | Stainless steel 304 (V2A) |
| Surface protection | Other |